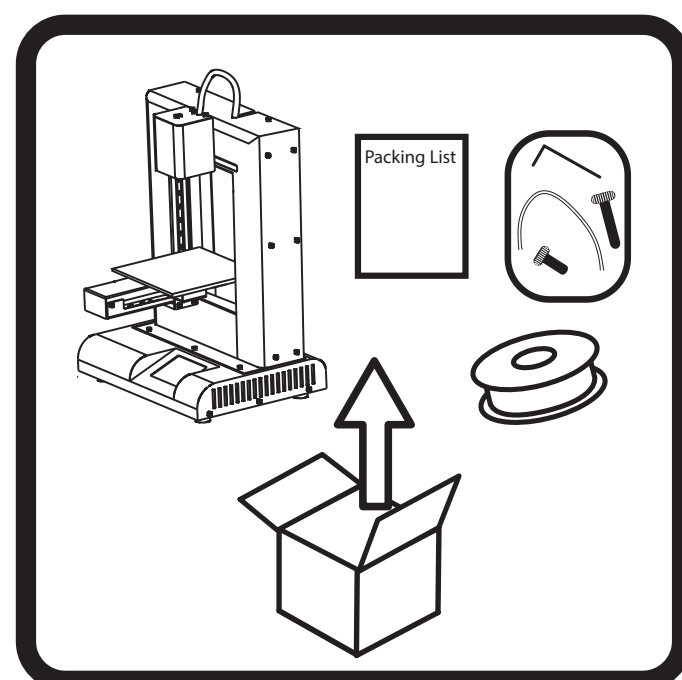


Root Quick Start Guide

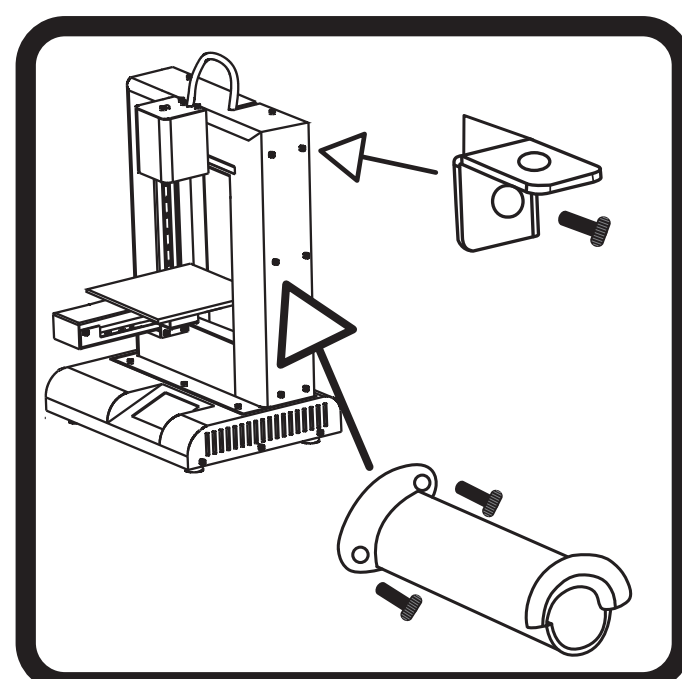
A detailed manual is included on the SD card
For a video guide visit: www.GP3D.com/video

1. Unpack



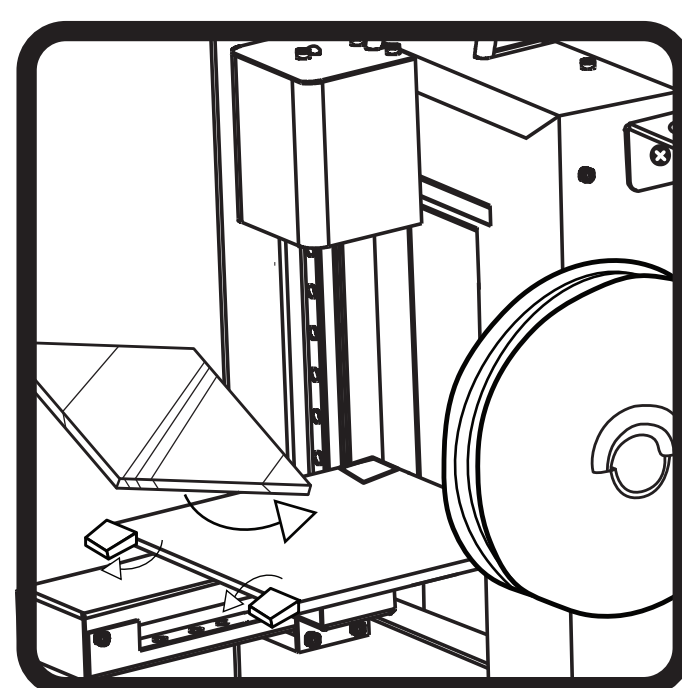
Remove contents of the box.

2. Screw in filament holder and guide



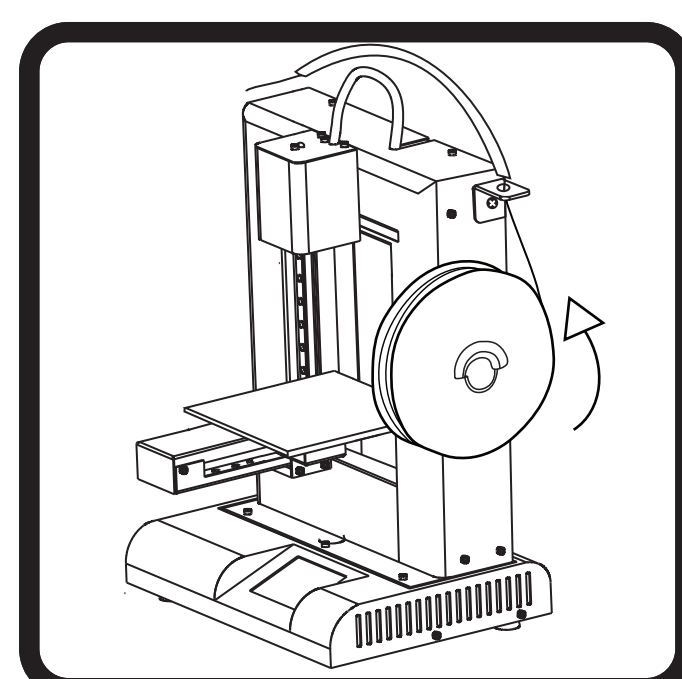
Screw in the spool holder and filament guide into the printer using the screws already on the body of the printer. These need to be placed on the same side of the printer. The long side of the filament guide should be perpendicular to the body of the printer.

3. Clamp glass plate to print bed



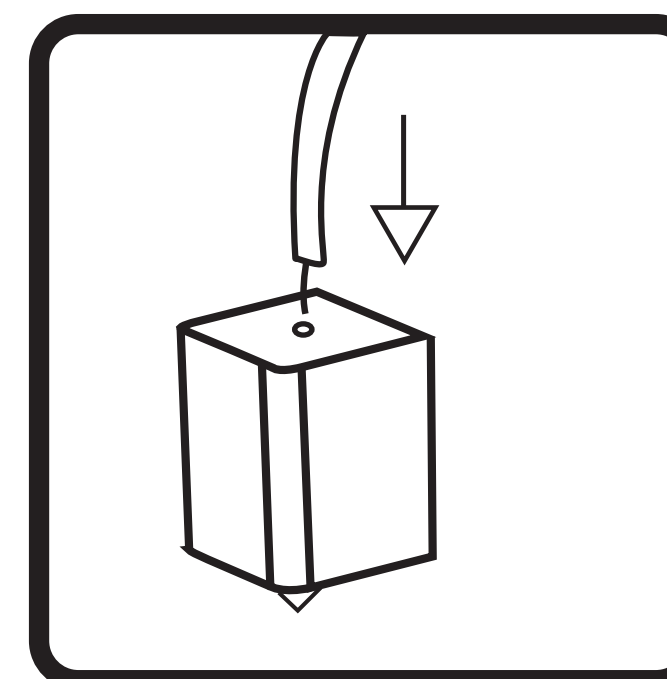
The front clips located on the print bed swivel outwards for easy access. Slide the glass plate under the clips located in the back. Then swing the front clips around to secure the glass plate in place. Clips may fit tightly, take care not to injure yourself during installation of glass plate. (Optional) Apply the included blue tape to the glass before sliding it into place, doing so will increase print adhesion.

4. Attach filament roll



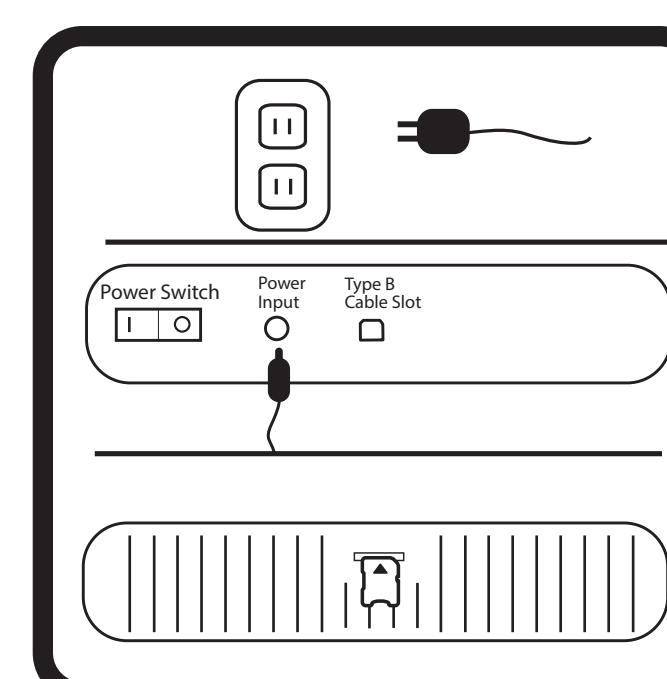
Attach the filament roll to the spool holder so that the printer will pull the roll counterclockwise. Insert the filament through the filament guide and filament guide tube.

5. Load the filament



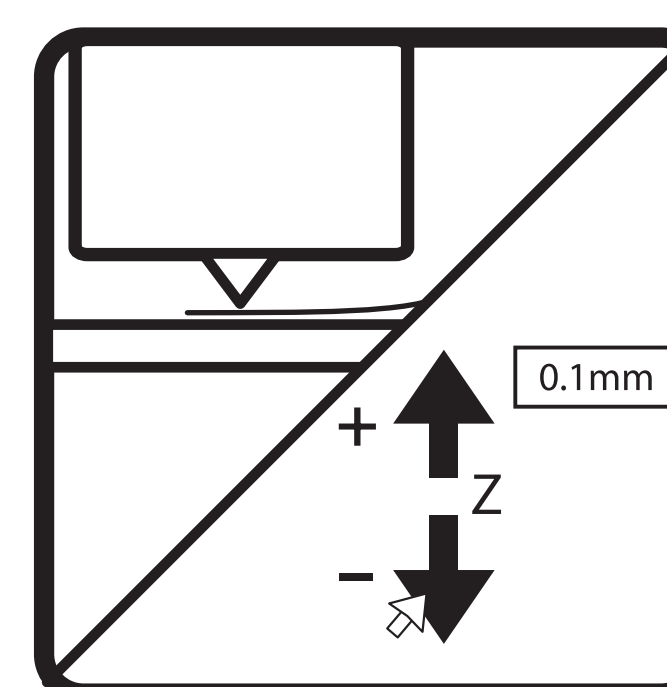
Insert the filament into the extruder hole, located on top of the extruder head. Push the filament in until it won't go any further, the printer will grab onto it once printing begins.

6. Power on



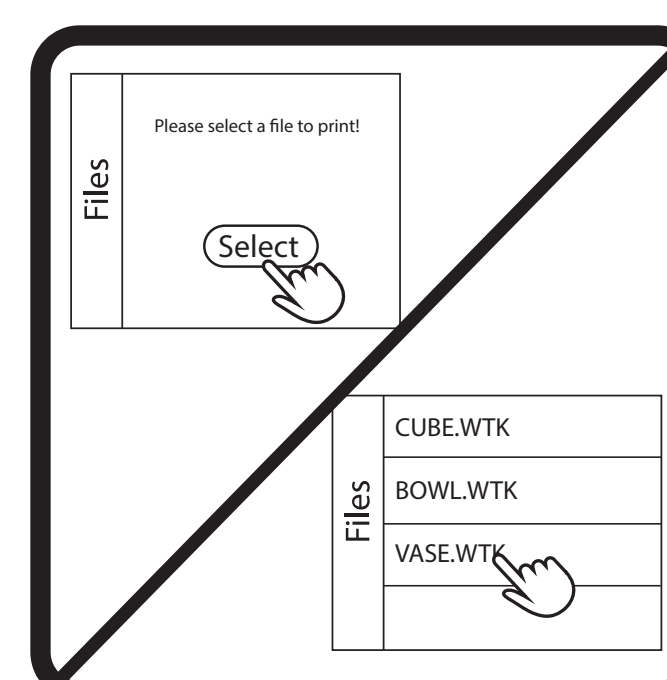
Plug the power supply into the wall and then into the printer. Insert the SD card into the SD slot on the left side of the printer. Turn on the machine via the on/off switch on the back.

7. Calibrate



Calibrate print height and level (see calibration guide).

8. Select file to print



Touch the LCD screen and press the scan button. A list of all the files on the SD card will be shown. Select a file to print and the printer will begin to warm up then begin printing. (Optional) Apply a thin layer of glue from a standard glue stick or a spritz of hairspray onto the print plate to further help the print adhere.