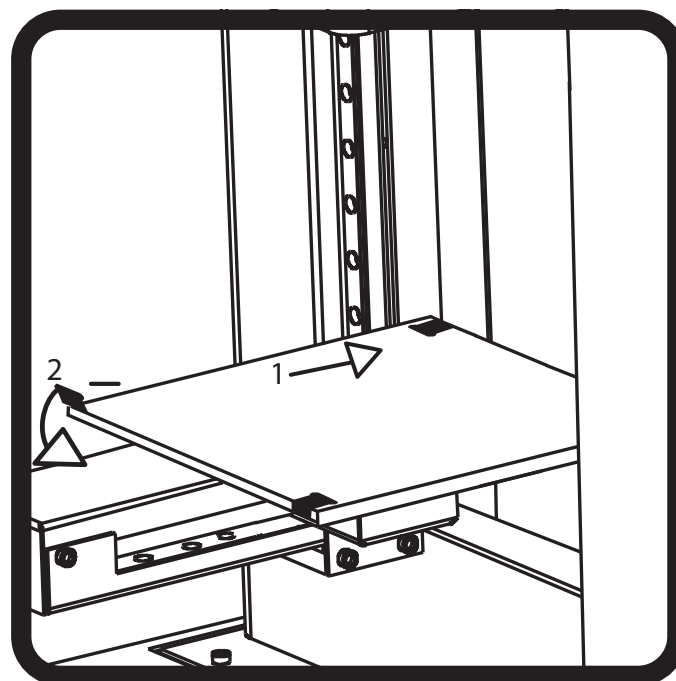


# Root Plus Quick Start Guide

A detailed manual is included on the USB drive

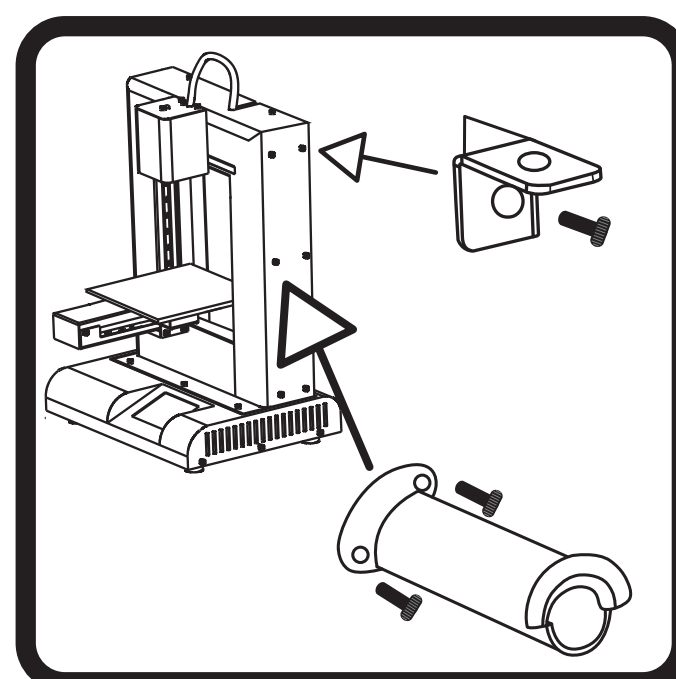
For a video guide visit: [www.GP3D.com/video](http://www.GP3D.com/video)

## 1. Unpack



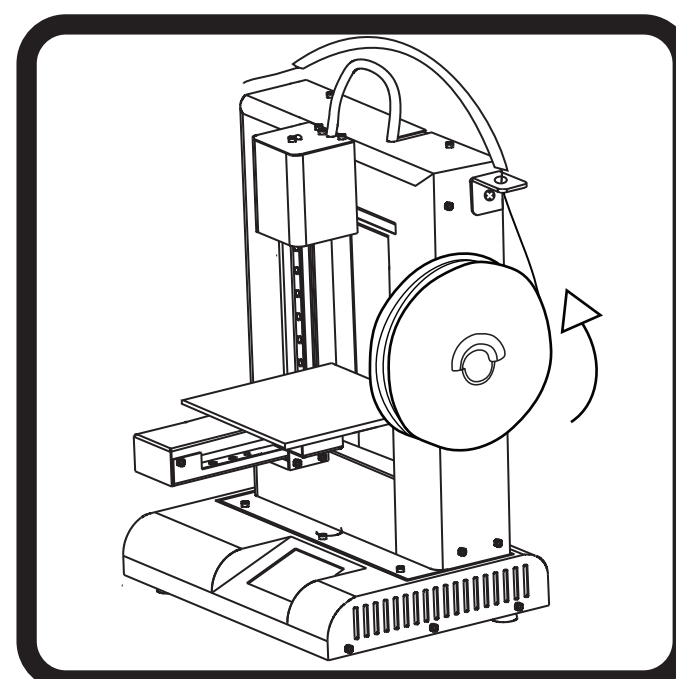
Remove contents of the box and remove the printer from the packaging. The front clips located on the print bed swivel outwards for easy access. Slide the glass plate under the clips located in the back. Then swing the front clips around to secure the glass plate in place. Clips may fit tightly, take care not to injure yourself during installation of glass plate. (Optional) Apply the included blue tape to the glass before sliding it into place, doing so will increase print adhesion.

## 2. Screw in filament holder and guide



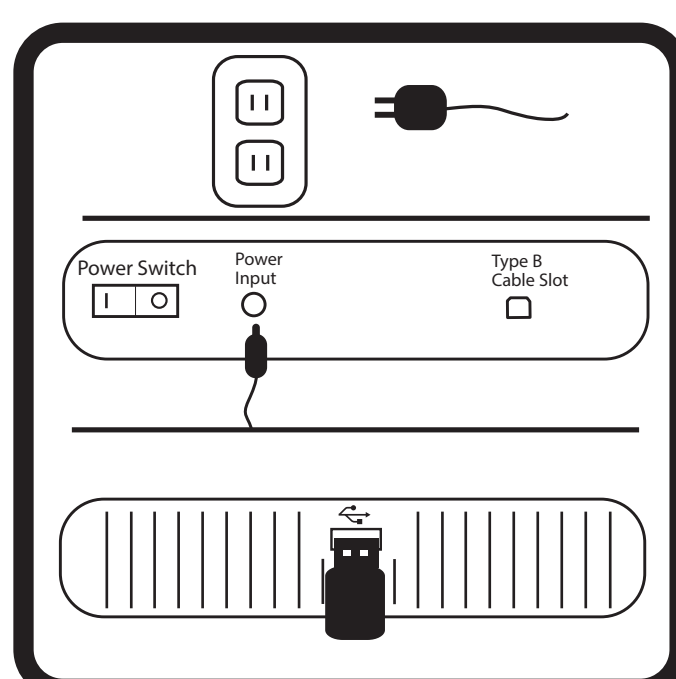
Screw in the spool holder and filament guide into the printer using the screws already on the body of the printer. These need to be placed on the same side of the printer. The long side of the filament guide should be perpendicular to the body of the printer.

## 3. Attach filament roll



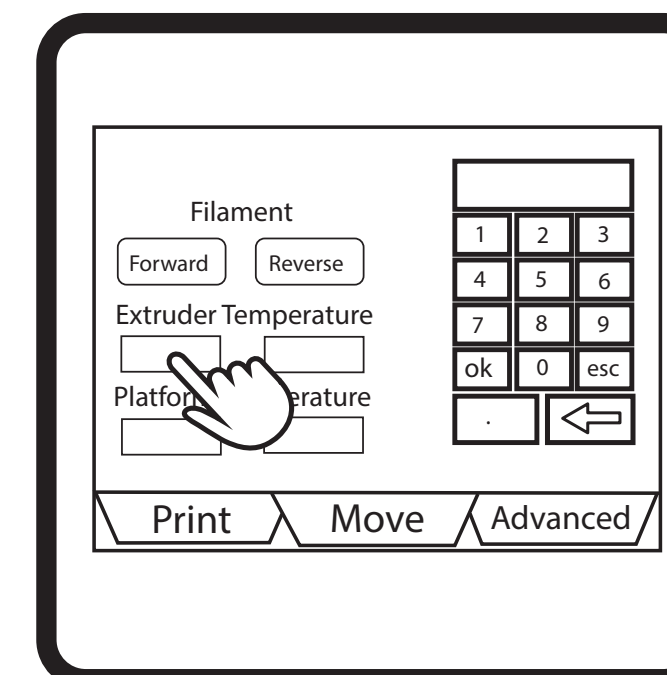
Attach the filament roll to the spool holder so that the printer will pull the roll counterclockwise. Insert the filament through the filament guide and filament guide tube.

## 4. Power on



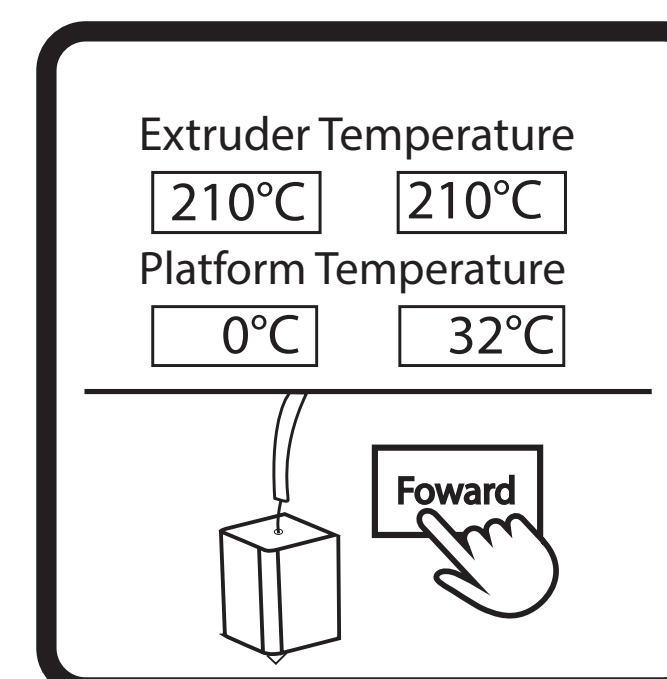
Plug the power supply into the wall and then into the printer. Insert the USB drive into the USB slot on the left side of the printer. Turn on the machine via the on/off switch on the back.

## 5. Preheat extruder



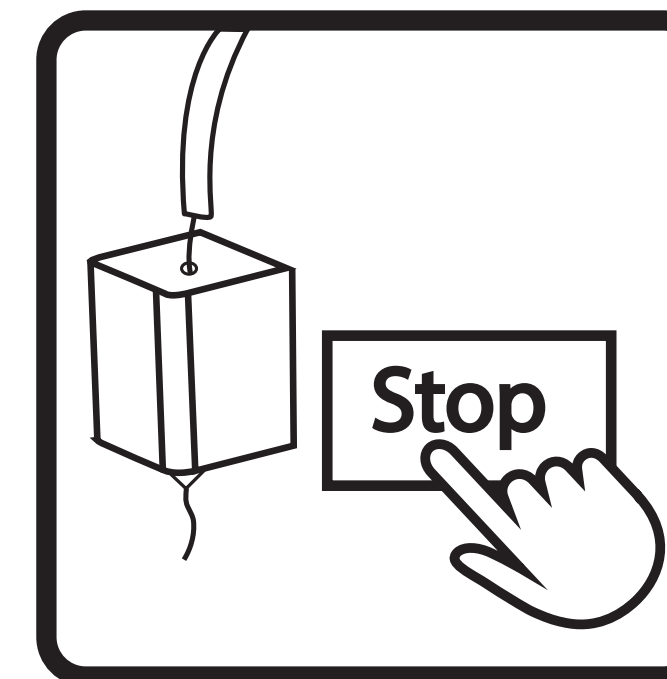
Using the LCD touch screen, go to the "Move" tab located at the bottom of the screen. Under "Extruder Temperature" will be two boxes, the left box displays the set temperature and the right box displays the current temperature. Tap the left box to set the temperature of the extruder to 220 via the number pad. Then press OK.

## 6. Load filament into extruder



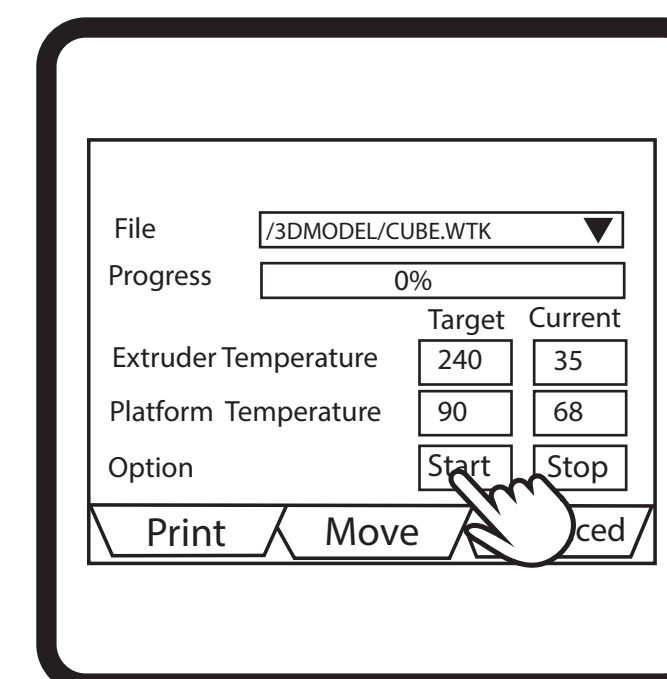
Once the printer has reached the desired temperature (the left and right extruder temperature will match), press the forward button and insert the filament into the hole located on the top of the print head. Feed the filament into the hole until you feel the print head grab the filament.

## 7. Remove extruded filament



Press stop after filament starts to come out of the extruder. Remove extruded filament.

## 8. Select file to print



On the "Print" tab, next to "file" will be a drop down list of available files to print. Select a file to print and the printer will begin to warm up then begin printing. (Optional) Apply a thin layer of glue from a standard glue stick or a spritz of hairspray onto the print plate to further help the print adhere.